



ASME B18.2.2 Castle Nut

Leader-Fastener is a manufacturer and distributor of **ASME B18.2.2 Castle Nut**. We have a complete line of service from having invested in production plants, export department and to having a quality control team and center to meet your requirements. We regard quality as the life of the company. We persist in good quality as the first policy and have established a set of quality control and inspection system according to the international standard. We have carried out ISO9001 Quality Guarantee System in every course of production, transportation and selling. We do hope we could be your partner in business by topping quality, knight service and

competitive price in the near future and be your friends as well.

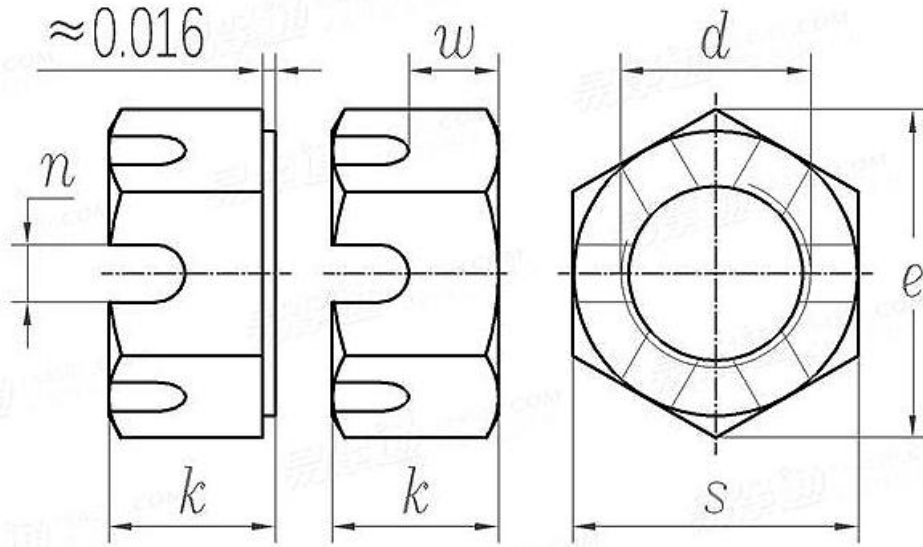
ASME B18.2.2 Castle nut from Leader Fastener come with pre-drilled holes through which cotter pins can be inserted to hold the nuts securely in place. This gives the nuts the ability to withstand constant vibrations and allows them to stay in place during small movements. As these nuts are pre-drilled, they can be used without a pilot hole. These nuts are slotted, allowing it to be installed and removed using screwdrivers. It is available in stainless steel, carbon steel, and alloy steel to bear more wear and tear while also making it more corrosion resistant.

Product Specification of **ASME B18.2.2 Castle Nut**

Material : Carbon steel, Stainless steel, Alloy Steel, Brass.

Finishment: Black, Zinc Plated, Zinc Yellow, HDG, Phosphate, DACROMET, Geomet, Magin, Ruspert, Teflon, etc.

ASME B 18.2.2 - 2022 Heavy Hex Slotted Nuts [Table 12] (ASTM A563 / F594 / F467)

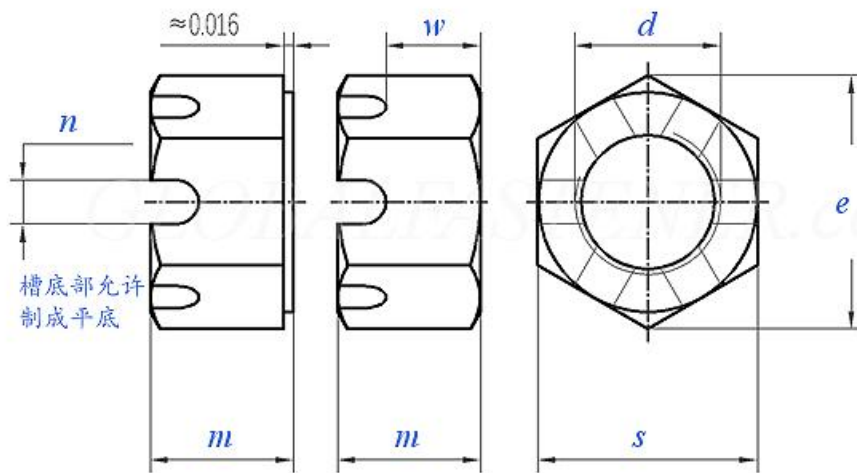


Screw Thread	1/4	5/16	3/8	7/16	1/2	9/16	5/8	3/4	7/8	1	1-1/8	1-1/4	
d	0.2500	0.3125	0.3750	0.4375	0.5000	0.5625	0.6250	0.7500	0.8750	1.0000	1.1250	1.2500	
PP	UNC	20	18	16	14	13	12	11	10	9	8	7	7
	UNF	28	24	24	20	20	18	18	16	14	12	12	12
	8-UN	-	-	-	-	-	-	-	-	-	-	8	8
s	Nominal Size	1/2	9/16	11/16	3/4	7/8	15/16	1-1/16	1-1/4	1-7/16	1-5/8	1-13/16	2
	min	0.488	0.546	0.669	0.728	0.850	0.909	1.031	1.212	1.394	1.575	1.756	1.938
	max	0.500	0.562	0.688	0.750	0.875	0.938	1.062	1.250	1.438	1.625	1.812	2.000
e	min	0.556	0.622	0.763	0.830	0.969	1.037	1.175	1.382	1.589	1.796	2.002	2.209
	max	0.577	0.650	0.794	0.866	1.010	1.083	1.227	1.443	1.660	1.876	2.093	2.309
k	Nominal Size	15/64	19/64	23/64	27/64	31/64	35/64	39/64	47/64	55/64	63/64	1-7/64	1-7/32
	min	0.218	0.280	0.341	0.403	0.464	0.526	0.587	0.710	0.833	0.956	1.079	1.187
	max	0.250	0.314	0.377	0.441	0.504	0.568	0.631	0.758	0.885	1.012	1.139	1.251
w	min	0.13	0.19	0.22	0.26	0.32	0.35	0.38	0.47	0.59	0.69	0.75	0.83
	max	0.15	0.21	0.24	0.28	0.34	0.37	0.40	0.49	0.62	0.72	0.78	0.86
n ①	min	0.07	0.09	0.12	0.12	0.15	0.15	0.18	0.18	0.18	0.24	0.24	0.31
	max	0.10	0.12	0.15	0.15	0.18	0.18	0.24	0.24	0.24	0.30	0.33	0.40

Screw	1-3/8	1-1/2	1-3/4	2	2-1/4	2-1/2	2-3/4	3	3-1/4	3-1/2	3-3/4	4
-------	-------	-------	-------	---	-------	-------	-------	---	-------	-------	-------	---

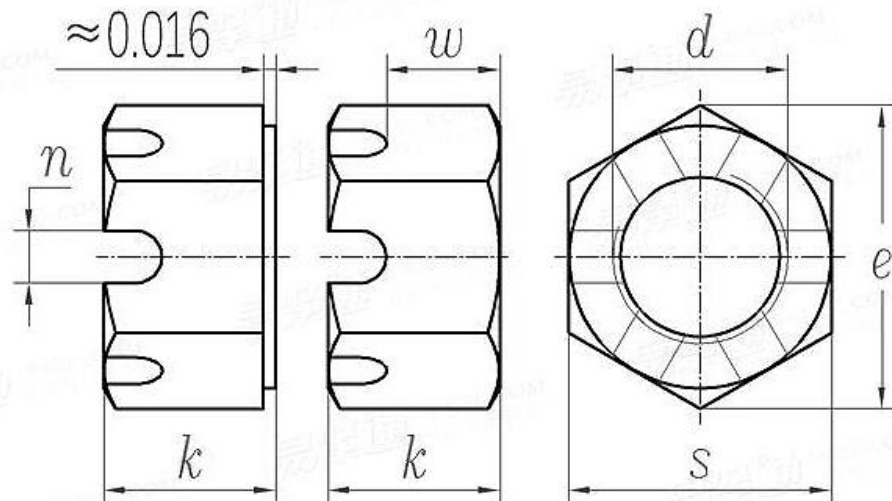
Thread													
d		1.3750	1.5000	1.7500	2.0000	2.2500	2.5000	2.7500	3.0000	3.2500	3.5000	3.7500	4.0000
PP	UNC	6	6	5	37988	37988	4	4	4	4	4	4	4
	UNF	12	12	-	-	-	-	-	-	-	-	-	-
	8-UN	8	8	8	8	8	8	8	8	8	8	8	8
s	Nominal Size	2-3/16	2-3/8	2-3/4	3-1/8	3-1/2	3-7/8	4-1/4	4-5/8	5	5-3/8	5-3/4	6-1/8
	min	2.119	2.300	2.662	3.025	3.388	3.750	4.112	4.475	4.838	5.200	5.562	5.925
	max	2.188	2.375	2.750	3.125	3.500	3.875	4.250	4.625	5.000	5.375	5.750	6.125
e	min	2.416	2.622	3.035	3.449	3.862	4.275	4.688	5.102	5.515	5.928	6.341	6.755
	max	2.526	2.742	3.175	3.608	4.041	4.474	4.907	5.340	5.774	6.207	6.640	7.073
k	Nominal Size	1-11/3	1-15/3	1-23/3	1-31/3	2-13/6	2-29/6	2-45/6	2-61/6	3-3/16	3-7/16	3-11/16	3-15/16
	min	1.310	1.433	1.679	1.925	2.155	2.401	2.647	2.893	3.124	3.370	3.616	3.862
	max	1.378	1.505	1.759	2.013	2.251	2.505	2.759	3.013	3.252	3.506	3.760	4.014
w	min	0.95	1.01	1.20	1.38	1.62	1.74	1.99	2.17	2.41	2.65	2.90	3.15
	max	0.99	1.05	1.24	1.43	1.67	1.79	2.05	2.23	2.47	2.72	2.97	3.22
n	min	0.31	0.37	0.43	0.43	0.43	0.55	0.55	0.62	0.62	0.62	0.62	0.62
	① max	0.40	0.46	0.52	0.52	0.52	0.64	0.64	0.71	0.71	0.71	0.71	0.71

ASME B 18.2.2 - 2022 Hex Slotted Nuts [Table6] (ASTM A563 / F594 / F467)



Screw Thread	1/4	5/16	3/8	7/16	1/2	9/16	5/8	3/4	7/8	1	1-1/8	1-1/4	1-3/8	1-1/2
--------------	-----	------	-----	------	-----	------	-----	-----	-----	---	-------	-------	-------	-------

d		0.250	0.312	0.375	0.437	0.500	0.562	0.625	0.750	0.875	1.000	1.125	1.250	1.375	1.500
		0	5	0	5	0	5	0	0	0	0	0	0	0	0
P P P	UNC	20	18	16	14	13	12	11	10	9	8	7	7	6	6
	UNF	28	24	24	20	20	18	18	16	14	12	12	12	12	12
	8-UN	-	-	-	-	-	-	-	-	-	-	8	8	8	8
s	Nominal Size	7/16	1/2	9/16	11/16	3/4	7/8	15/16	1-1/8	1-5/16	1-1/2	1-11/16	1-7/8	2-1/16	2-1/4
	min	0.428	0.489	0.551	0.675	0.736	0.861	0.922	1.088	1.269	1.450	1.631	1.812	1.994	2.175
	max	0.438	0.500	0.562	0.688	0.750	0.875	0.938	1.125	1.312	1.500	1.688	1.875	2.062	2.250
e	min	0.488	0.557	0.628	0.768	0.840	0.982	1.051	1.240	1.447	1.653	1.859	2.066	2.273	2.480
	max	0.505	0.577	0.650	0.794	0.866	1.010	1.083	1.299	1.516	1.732	1.949	2.165	2.382	2.598
m	Nominal Size	7/32	17/64	21/64	3/8	7/16	31/64	35/64	41/64	3/4	55/64	31/32	1-1/16	1-11/16	1-9/32
	min	0.212	0.258	0.320	0.365	0.427	0.473	0.535	0.617	0.724	0.831	0.939	1.030	1.138	1.245
	max	0.226	0.273	0.337	0.385	0.448	0.496	0.559	0.665	0.776	0.887	0.999	1.094	1.206	1.317
w	min	0.12	0.16	0.19	0.21	0.27	0.29	0.32	0.38	0.49	0.56	0.61	0.67	0.78	0.82
	max	0.14	0.18	0.21	0.23	0.29	0.31	0.34	0.40	0.52	0.59	0.64	0.70	0.82	0.86
n	min	0.07	0.09	0.12	0.12	0.15	0.15	0.18	0.18	0.18	0.24	0.24	0.31	0.31	0.37
	max	0.10	0.12	0.15	0.15	0.18	0.18	0.24	0.24	0.24	0.30	0.33	0.40	0.40	0.46

ASME B 18.2.2 - 2022 Hex Thick Slotted Nuts [Table8] (ASTM A563 / F594 / F467)


d	1/4	5/16	3/8	7/16	1/2	9/16	5/8	3/4	7/8	1	1-1/8	1-1/4	1-3/8	1-1/2
d	0.250	0.312	0.375	0.437	0.500	0.562	0.625	0.750	0.875	1.000	1.125	1.250	1.375	1.500

		0	5	0	5	0	5	0	0	0	0	0	0	0	0
P P	UNC	20	18	16	14	13	12	11	10	9	8	7	7	6	6
	UNF	28	24	24	20	20	18	18	16	14	12	12	12	12	12
	8-UN	-	-	-	-	-	-	-	-	-	-	8	8	8	8
s	Nomin al Size	7/16	1/2	9/16	11/16	3/4	7/8	15/16	1-1/8	1-5/16	1-1/2	1-11/16	1-7/8	2-1/16	2-1/4
	min	0.428	0.489	0.551	0.675	0.736	0.861	0.922	1.088	1.269	1.450	1.631	1.812	1.994	2.175
	max	0.438	0.500	0.562	0.688	0.750	0.875	0.938	1.125	1.312	1.500	1.688	1.875	2.062	2.250
e	min	0.488	0.557	0.628	0.768	0.840	0.982	1.051	1.240	1.447	1.653	1.859	2.066	2.273	2.480
	max	0.505	0.577	0.650	0.794	0.866	1.010	1.083	1.299	1.516	1.732	1.949	2.165	2.382	2.598
k	Nomin al Size	9/32	21/64	13/32	29/64	9/16	39/64	23/32	13/16	29/32	1	1-5/32	1-1/4	1-3/8	1-1/2
	min	0.274	0.320	0.398	0.444	0.552	0.598	0.706	0.798	0.890	0.982	1.136	1.228	1.351	1.474
	max	0.288	0.336	0.415	0.463	0.573	0.621	0.731	0.827	0.922	1.018	1.176	1.272	1.399	1.526
w	min	0.18	0.22	0.27	0.29	0.40	0.41	0.49	0.55	0.64	0.70	0.80	0.86	0.98	1.04
	max	0.20	0.24	0.29	0.31	0.42	0.43	0.51	0.57	0.67	0.73	0.83	0.89	1.02	1.08
n	min	0.07	0.09	0.12	0.12	0.15	0.15	0.18	0.18	0.18	0.24	0.24	0.31	0.31	0.37
	max	0.10	0.12	0.15	0.15	0.18	0.18	0.24	0.24	0.24	0.30	0.33	0.40	0.40	0.46